

# 22ND BIENNALE OF SYDNEY

# NIRIN

**JUNE -  
SEPTEMBER 2020**

**#NIRIN2020**

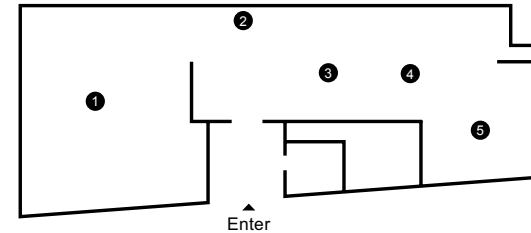
**BIENNALEOFSYDNEY.ART**

## ARTSPACE

Artspace is a leading institution for the production and presentation of contemporary art in the Asia-Pacific. Housed in the historic Gunner building in Woolloomooloo, Artspace is only a five-minute walk from the Art Gallery of NSW on the eastern side of Sydney's CBD or a 15-minute walk from Kings Cross Station. Bus route 311 stops directly opposite Artspace, and there is limited metered parking available or the Domain carpark is a short 10-minute walk away.

Artspace can be assessed by wheelchairs, due to the ground floor location. The front door is not automatic. Toilets are located on the ground floor.

43-51 Cowper Wharf Road,  
Woolloomooloo  
Daily, 10 am - 5 pm  
1 June - 27 September 2020  
02 9356 0555  
[artspace.org.au](http://artspace.org.au)



- 1 Colectivo Ayllu
- 2 Taqralik Partridge
- 3 Fátima Rodrigo Gonzales
- 4 Tennant Creek Brio
- 5 Ibrahim Mahama

### MAJOR GOVERNMENT PARTNERS



CITY OF SYDNEY

### PRINCIPAL PATRON



### Win a private cruise on HAIVETA

Take the 22nd Biennale of Sydney Visitor Survey and you could win a private cruise on HAIVETA for you and 9 friends.

HAIVETA is a heritage ferry that has been transformed into a visually striking artwork, created in collaboration with BE. Collective and supported by Noakes Group. Interpreting and abstracting Pacifika tattoo motifs, the vessel celebrates women's mark-making.

Go to [nirinsurvey.com](http://nirinsurvey.com) to take the survey and enter.